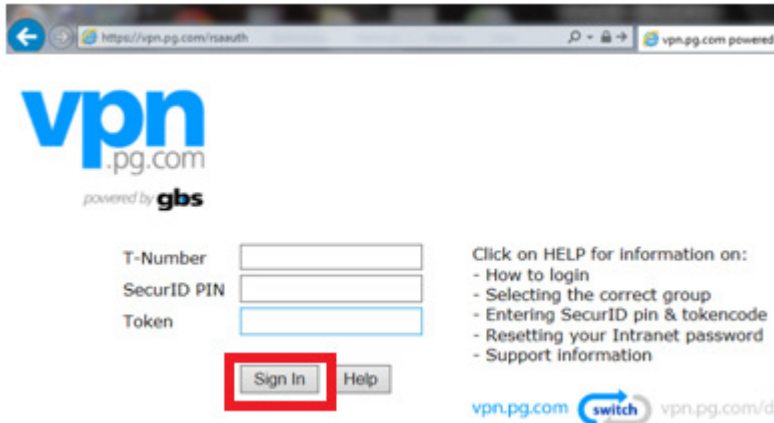




P&G VPN Configuration Setup for EBPs

EBP & Non Managed PG Device Junos Pulse install and quick start guide

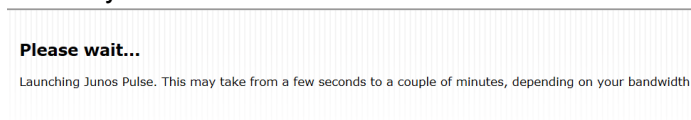
1. Go to <https://vpn.pg.com/rsaauth>
2. Log on with your P&G assigned T#, PIN and Token code



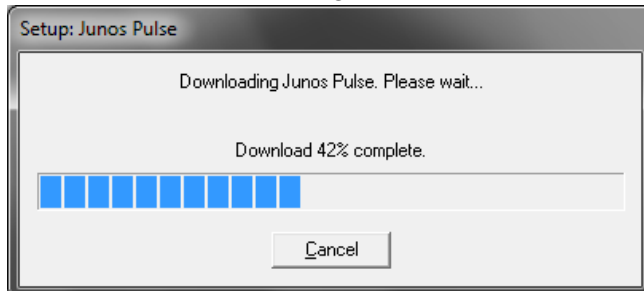
3. Click Proceed at the banner screen.



4. You may see this screen:



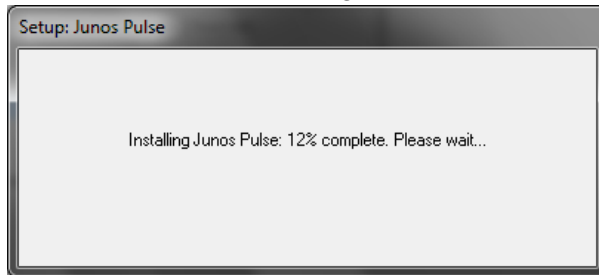
5. Click Yes if you are prompted for a User Account Control.
6. The client should then begin to download



7. Click Yes if you are again prompted for a User Account Control.

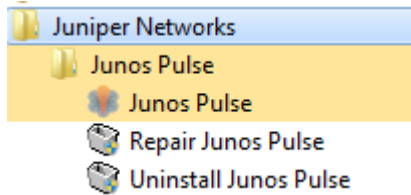


8. The Install should then begin



9. Restart your computer

10. Open the client at Start>All Programs>Juniper Networks>Junos Pulse>Junos Pulse



11. You will then see the below connection options window.

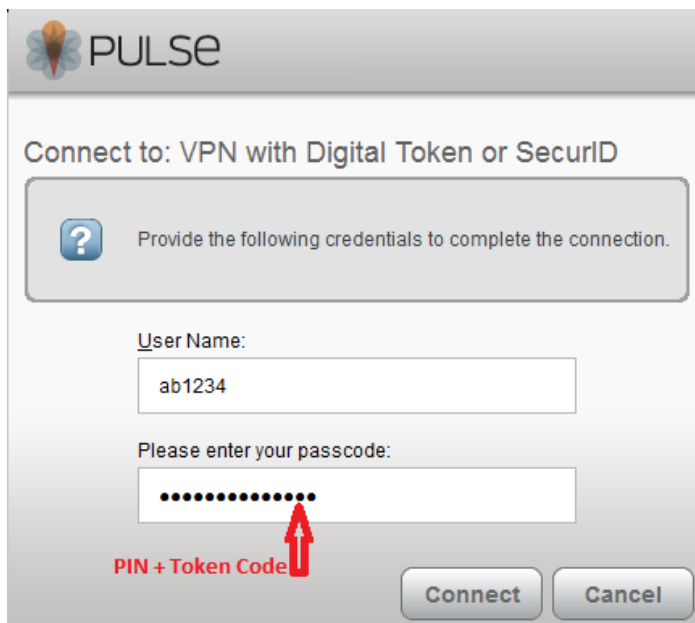




12. You will want to be sure to select the **VPN with Digital Token or SecurID** connection option. Click connect.

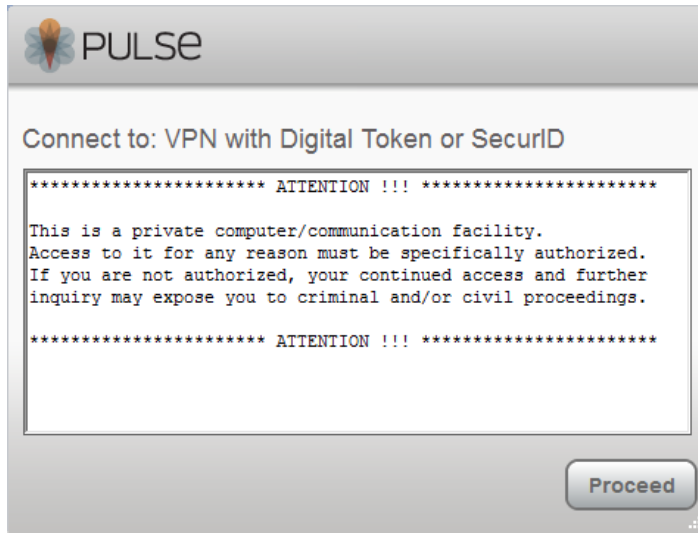


13. Enter your T# in the User Name field and your **PIN + Token Code** in the password field. Click Connect.

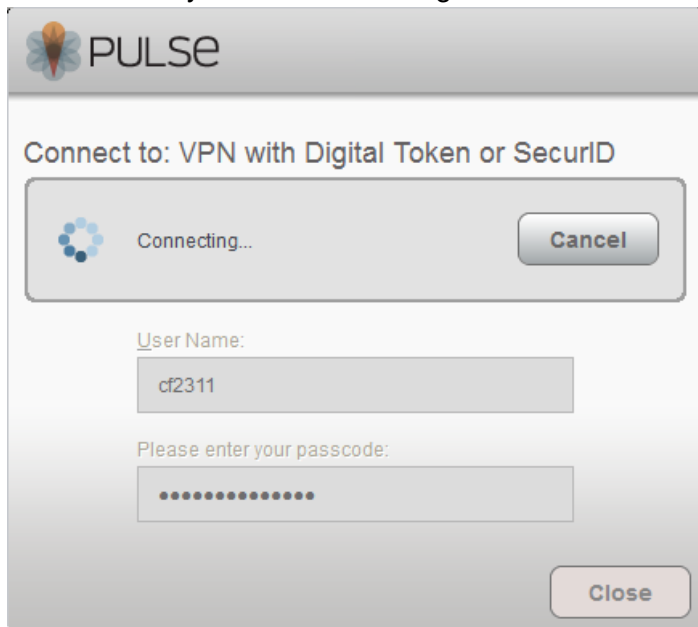




14. Click Proceed at the banner window.

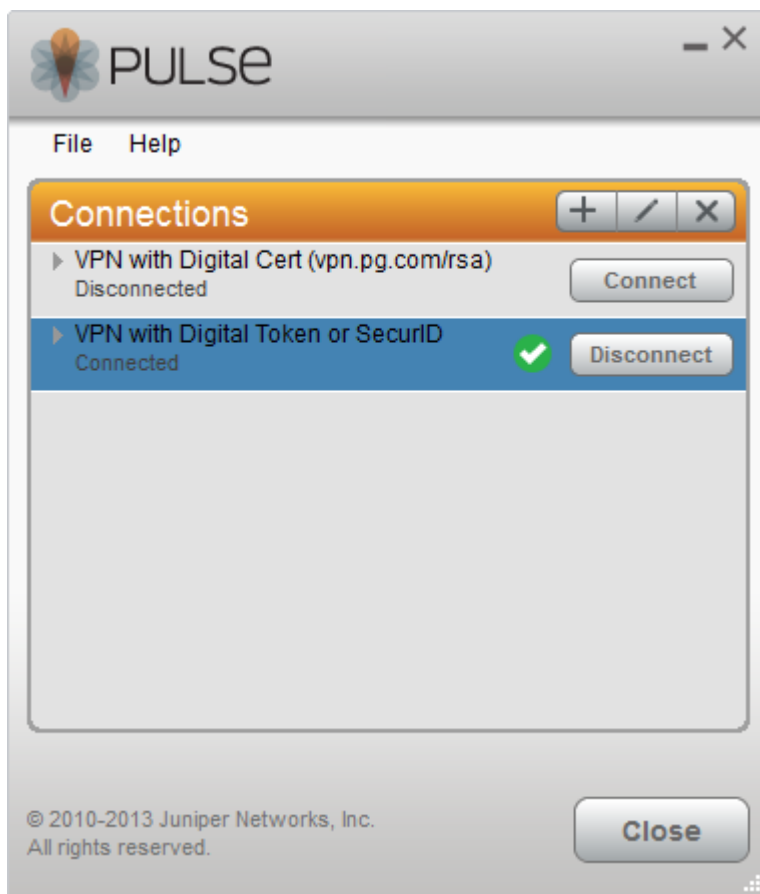


15. It should briefly show a connecting status.





16. And then a Connection complete status.



17. You should now be able to access P&G resources.